



# THE R.I.P.S.A.W. REVUE

wiscwoodworkersguild.org

Rendering Informative Programs Serving Area Woodworkers

Volume 30 No 11

A monthly publication of the Wisconsin Woodworkers Guild

November 2011

## Corey's Corner

We need board members. The board is currently seeking your help. Please consider joining the board. The guild cannot operate without a board. I'm not sure how many ways I can say it, but we really do need some help filling the following open board positions: Membership chair, Secretary, and co-chair of the Programs and Workshops committee. This is your chance to give back to the Guild. The Membership chair collects paperwork from new members, updates the member directory and email



addresses of current members and shares that information so our newsletter makes it to the members in a timely way. The Secretary keeps track of Guild paperwork (don't worry, there isn't much) and records the board meeting minutes, please talk with Ed Cessna if you are interested in the position. The Programs/Workshops co-chair will be working with Jerry Strojny coordinating upcoming programs and workshops, keeping track of who is sponsoring the workshop, etc. Please give it some serious consideration.

Ornament makers with their completed projects.



Work Safe, Corey

## Rose Engine

At our November meeting there will be a demonstration of a Rose Engine, which is a machine for adding decorative designs to a woodworking project. About a year ago, six woodworkers including several from the Guild, embarked on building a machine based on a design featured in a 2007 woodworking magazine. Three of us have spent the most time and each has gone in a different direction using the machines capabilities, which we will display at the meeting. Even if you have no intention of building or using the machine, it is an interesting gadget to watch in operation. Time will not permit us to finish a project but we will demonstrate as many techniques as time permits.

### In This Issue

Corey's Corner	1
Member Projects	2
Toys, toys, toys	2
Board Briefs	3
Woodworking Mach. Wkshp	3
Reflections & Pictures	4 & 5
Woodcraft Class Schedule	6
Rockler Thank you	7
Programs & Workshops	7
Nov 2011 Meeting	Back



## Member Projects



Member Dave Gillis shared this picture of a series of cedar chests he made for his family.



## TOYS. TOYS, TOYS

Group toy making continues every Monday at Woodcraft from 9 AM until 3 PM. Come and join the group for an entire day or part of a day. Call me with any questions ó 262-271-5239.

*Bill Godfrey*, Toy Chair

**Wisconsin Woodworkers Guild  
Board Briefs October, 2011**

**Attendees:** Corey Megal, John Johnson, Leila Crandall Frink, Jerry Strojny, Jerry Tackes, Ed Cessna

**Treasury Balance:** \$6117.02 as of October 12. John Johnson presented a "Cash Flow" chart covering the last 4 years.

**Membership:** 127

**Programs/Workshops:** So far 3 people have signed up for the "Woodworking Machines Workshop" scheduled for January 14, 2012. Attendees will learn the proper set-up and routine maintenance for the major woodworking machines. Workshop cost is \$25. 10 people must sign up for the workshop to be held.

**Other Business:**

Board positions open for 2011 are secretary, membership chair, and co-chair program/workshop committee. Anyone interested should contact Cory Megal.

As an experiment, effective in November board meetings will be held at 6:00 PM at Woodcraft on the same night as the monthly meeting. It is hoped that this move will enable more members to participate in Guild leadership.

The Guild will submit an entry in the Minwax Company's "Community Craftsman Award" program.

The Guild voice mail number is being changed to Google Voice. This move will result in savings of approximately \$15 a month.

Respectively Submitted, *Ed Cessna*

**WOODWORKING MACHINES WORKSHOP**

A workshop covering general setup and maintenance for common woodworking machines has been scheduled for January 14, 2012. Dave Eubanks, owner of Independent Machine Service & Repair, LLC from Waukesha will lead the workshop. Dave has over 35 years experience in servicing and repairing many types of woodworking and metalworking machines. IMS&R is an authorized parts and service center for the Stanley Black&Decker group (Delta, DeWalt, etc.) and the Walter Meier group (Powermatic, Jet, Wilton) and services many other brands like General, Grizzly, Holz-Her, Burlington, Byrd Tool, Casadei, Oliver, Felder, Northfield, Omega, Saw Stop, State, and many more.

The machines to be covered are the table saw, band saw, drill press, jointer, planer, and time permitting, the lathe. You will be shown proper set-up and alignment for each machine along with routine maintenance. This is your opportunity to learn more about maintaining the machines you use every day.

The workshop fee is \$25 and is limited to 15 people. It will be hosted at Bill Godfrey's shop at S53 W26445 Foxvale Court, Waukesha. We will start at 9 AM and continue until around 3 PM (bring your own lunch). Sign-up will be available at the October, November, and January monthly meetings.

Submitted by, *Ed Cessna*

**For Sale**

Table saw-Makita #2702 8 1/4 inch w/stand - \$200 (Port Washington can deliver) Works great, 4600 RPM 15 amp motor provides lots of cutting power.

Perfect size, light weight aluminum (45lbs) makes it easy to move.

About 7-10 years old, lightly used by retired guy to make children's toys. Electric brake, 22 x 27 table top with fence, blade guard, push stick, manual, blade change tools and extra blades. New one costs about \$750. Make an offer.

Call for details. Jerry Smaglik 262-284-6468

We were lucky Bob Dickey a Mukwonago artist and box maker as our October speaker. Bob attended the Minneapolis school of Art and Design. He is currently retired from being a software engineer. He has been making boxes for 11 years and selling them at Art Fairs and Shows. Currently, Bob has a Gallery in Mukwonago called Wood'n It Be Nice, where he has many of his items and additional items of guest artists. Bob's items include jewelry boxes, keepsake boxes, memory boxes, urns and accent tables. His guest artists show gourd art, ceramics, turned wood and acrylic pens, furniture and much more.

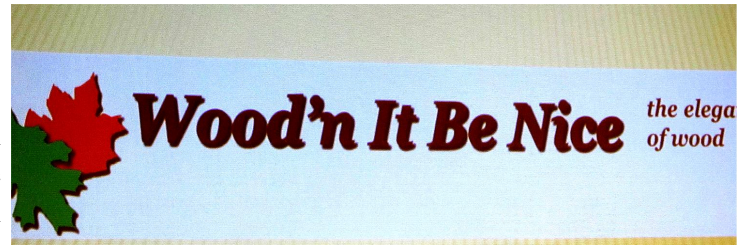
Bob's boxes are known for the hidden brass pin for a hinge, removable dividers and trays and his prized pagoda boxes. He showed slides of many of his boxes and brought a few to show at the meeting. His pagoda box is the one he is most known for and he is the designer of the box. He makes it small enough to sit on a table and has also put legs on it so it is a standalone piece of furniture. It was fun to see his boxes up close and examine the construction. It was definitely an inspiration.

When designing a box, Bob has some standards. He works with highly colored and figured wood, he builds with mitered corners with slip feathers, he has profiled sides, he uses well built and high quality hinges, and his finish produces a beautiful and touchable box. The inside of the box has the steps for the trays built in to the wood. He makes linings for the trays that add to the beauty of the box. He designs the box outside to be beautiful.

The finish Bob uses is applied with a Turbinaire 1235 spray gun. He uses a solvent based lacquer with added waxes that give it an amber, hand-rubbed appearance right out of the gun. His linings are either felt, flocking, PSA backed velvet, velvet or, his current favorite, micro suede. The glue he uses is Tightbond.

Bob told us his favorite tools include an Inkra gauge, a flat bottom rip blade, Bessey angle clamps, his miter gauge, a Japanese hand saw, and his Inkra fence system on the router table. Books that Bob recommended to us if we want to improve our box making include: Box Making Basics by David Freedman, and Box Making by Doug Stone.

We appreciate the presentation from Bob Dickey and hope to visit his store in Mukwonago at 716B Main Street. His winter hours are Wed thru Sat from 10 AM to 2:30 PM. Give him a visit.



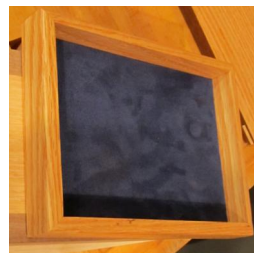
Bob Dickey, artist and owner of Wood'n it be Nice located in Mukwanago



Clamping system for boxes

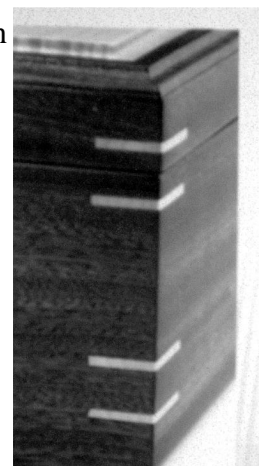


Features of many of Bob's Boxes



Velvet lining in drawers

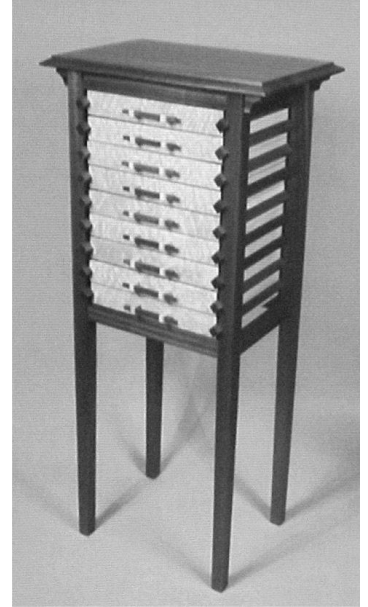
Stepped inside wall holds drawers



Mitered corners in contrasting wood



Examples of Bob Dickey's wooden boxes



### Publications Committee

Editor

**Leila Crandall-Frink** 414/453-4118  
Lfrink@wi.rr.com

Associate Editor

**Si Farmer** 414/464-6021  
sfarmer1@wi.rr.com

Web Master

**Brian Halligan** 414/771-9835  
halligan@mcw.edu

You may also send email to:  
wiscwoodworkersguild@wiscwoodworkersguild.org

### Officers

President	<b>Corey Megal</b>	414/282-8504 camegal@yahoo.com
Vice President	<b>Jerry Tackes</b>	414/431-4242 brewwood@wi.rr.com
Secretary	<b>Ed Cessna</b>	414/764-3870 ectablesaw@yahoo.com
Treasurer	<b>John Johnson</b>	815/575-9266 jcjkj@gmail.com
Program Co-Chairs	<b>Jerry Kashmeric</b>	262/827-0495 jpkashmerick@mac.com
	<b>Jerry Strojny</b>	414/649-0677 jerry.strojny@gmail.com
Exhibits/Publicity	<b>George Egenhoefer</b>	
Publications	<b>Leila Crandall-Frink</b>	414/453-4118 Lfrink@wi.rr.com

### Woodcraft Class Schedule

Sharpening Lathe Tools on grinder systems with jig, Sun,  
Nov 06, 10:30 AM - 3:30 PM

Wood Preparation Using The Planer, Jointer & Table,  
Wed, Nov 09, 6 - 9 PM

Turn for the Troops, Sat, Nov 12, 9:30 AM - 5 PM

Turn A Wall Street Pen and Pencil Set, Sun, Nov 13,  
10:30 AM - 2:30 PM

Introduction to Box Making, Sun, Nov 13, 10:30 AM -  
4 PM

Basic Router Techniques, Mon, Nov 14, 6 - 9 PM

Carve the Green Heron, Tue, Nov 22, 6 - 9 PM

Turning 101: Intro To Lathe Work, Sat, Nov 26, 9:30  
AM - 3:30 PM

Stain & Topcoat with General Finish, Sun, Nov 27,  
10:30 AM - 2:30 PM

Advanced Router Part 2 - The Router Table, Wed, Nov  
30, 6 - 9 PM

### Friends of the Wisconsin Woodworkers Guild

**Homestead Finishing Products**, Cleveland, OH  
(216) 631-5309 [www.homesteadfinishing.com](http://www.homesteadfinishing.com)

**Rockler's (The Woodworker's Store)** 845 N.  
Mayfair Rd, Wauwatosa, (414) 774-1882

**Woodcraft**, 14115 W. Greenfield Ave New Berlin, WI  
53151 Phone: (262) 785-6770

**Woodline USA** can be reached at (800) 472-6950

**Green Man Tree & Landscape Services**, owned by  
Guild member Peter Gustin, Sr. (414) 659-0753

### Raffle & Door Prizes

The October raffle and door prize winners were: Ron Reuter won the raffle; and Bob Hillman, Justin Gasal, Jerry Tackes, Larry Whitstone, and Ed Cessna were the lucky door prize winners. Congratulation to all!!

### Library Reviews

Do you borrow materials from the Guild library? Have you read a good book or seen an excellent DVD? If you have, how about sharing your thoughts with your fellow Guild members.

Just tell Corey Megal that you would like to share your thoughts about a book or video. When called upon, give the name and call number of the item and tell us why you liked it. Your brief review may encourage others to use the item.

## WWG Programs and Workshops

### November Program – “Rose Engine Demonstration”

- **Thursday November 3<sup>rd</sup>** Our very own **Jerry Tackes** will be presenting this month on the unique machine he was part of building. Rose Engines have been around since the 18<sup>th</sup> century.

*A rose engine lathe is a specialized kind of geometric lathe. The headstock rocks back and forth with a rocking motion or along the spindle axis in a pumping motion, controlled by a rubber moving against a rosette or cam-like pattern mounted on the spindle, while the lathe spindle rotates. Rose engine work can make flower patterns, as well as convoluted, symmetrical, multi-lobed organic patterns. The patterns it produces are similar to that of a Spirograph, in metal. No other ornamental lathe can produce these “rose” patterns. (Taken from Wikipedia)*

*Jerry (and a group of others) have spent months building their version of a Rose Engine. We will hear some stories from the build and then a demonstration of what it can do.*

### November Workshop

- No workshop this month.

### December Program – “Holiday Dinner”

- **Thursday December 1<sup>st</sup>** Sit down and relax. Let’s have dinner together. A great time to review the past year and look forward to the coming New Year.

### December Workshop

- No workshop this month.

### January Program – “Electric Motors”

- **Thursday January 5<sup>th</sup>** **Dennis Motl** will be in to teach us all about the electric motors that drive many of our machines in the workshop. He’ll explain how they work and why. There may even be time to discuss the methods of making a phase generator to power a 3 phase motor with single phase power. Yes, that 3 phase table saw you picked up for a steal from the

*school that just shut down its woodshop program, can come to life in your single phase home workshop. Dennis can explain how to do that.*

### January Workshop

- **Saturday January 14<sup>th</sup>** A workshop covering general setup and maintenance for common woodworking machines. **Dave Eubanks**, owner of Independent Machine Service & Repair, LLC from Waukesha will lead the workshop. Dave has over 35 years experience in servicing and repairing many types of woodworking and metalworking machines. IMS&R is an authorized parts and service center for the Stanley Black&Decker group (Delta, DeWalt, etc.) and the Walter Meier group (Powermatic, Jet, Wilton) and services many other brands like General, Grizzly, Holz-Her, Burlington, Byrd Tool, Casadei, Oliver, Felder, Northfield, Omega, Saw Stop, State, and many more.

*The machines to be covered are the table saw, band saw, drill press, jointer, planer, and time permitting, the lathe. You will be shown proper set-up and alignment for each machine along with routine maintenance. This is your opportunity to learn more about maintaining the machines you use every day.*

*The workshop fee is \$25 and is limited to 15 people. It will be hosted at Bill Godfrey’s shop at S53 W26445 Foxvale Court, Waukesha. We will start at 9 AM and continue until around 3 PM (bring your own lunch).*

## Contact information for WWG Workshops

John Johnson  
9409 Nicholas Lane  
Spring Grove, IL 60081-8286  
815/575-9266  
Email: [jcikyj@gmail.com](mailto:jcikyj@gmail.com)

**A very special THANK YOU to Rockler’s Woodworking store for providing items that are raffled at our monthly meetings!**

# Wisconsin Woodworkers Guild

Remember to return the forms for  
renewing your membership and  
registering for the Holiday party.  
Thank you.

## WWG Monthly Meeting

Thursday, November 3<sup>rd</sup>

6:30 PM

at Woodcraft

(lower level meeting room)

14115 W. Greenfield Ave.

New Berlin, WI 53151

## Rose Engine Demonstration

Presenter: *Jerry Tackes*

Guild Member & Vice President

### In This Issue

Corey's Corner	1
Member Projects	2
Toys, toys, toys	2
Board Briefs	3
Woodworking Mach. Wkshp	3
Reflections & Pictures	4 & 5
Woodcraft Class Schedule	6
Rockler Thank you	7
Programs & Workshops	7
Nov 2011 Meeting	Back



The Wisconsin Woodworkers Guild  
Box 137  
Milwaukee, WI 53201

**First Class Mail**